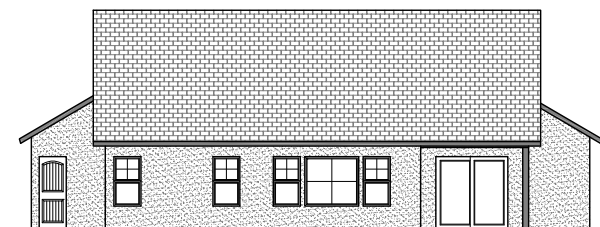
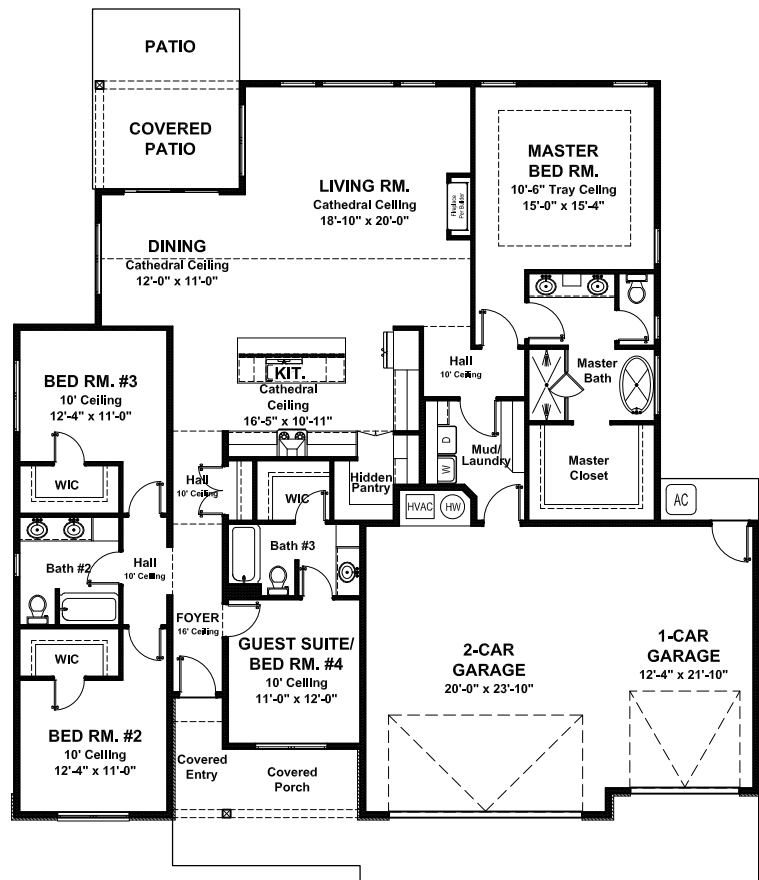




Main Living Area = 2,334 Sq. Ft.
Garage = 795 Sq. Ft.
Covered Entry/Porch = 107 Sq. Ft.
Covered Patio = 108 Sq Ft.
Dimensions = 62'-1" (w) x 61'-5" (d)
FNDN: Slab Exterior Walls: 2x6

Style: Rustic - 4 Bedroom - 3 Bath - 3 Car Garage

This charming plan with an appealing facade includes 4 bedrooms, one being a guest suite with an private bath and walk in closet. The entry has a covered front porch and the foyer opens up to a 16' ceiling with a transom window to light the hall. The kitchen, living and dining share a cathedral ceiling that enhances the open concept and the kitchen features a hidden pantry with a mini butler's pantry section. All secondary bedrooms are spacious and have walk-in closets and the guest suite is perfect for a private extended stay.



Back Elevation